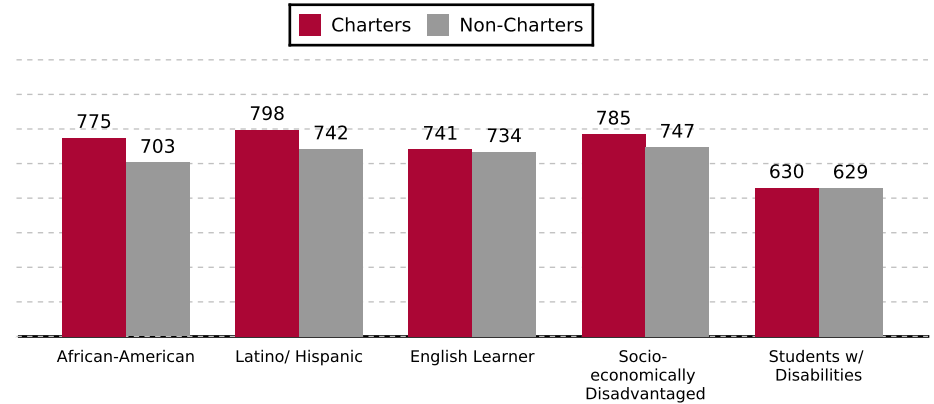
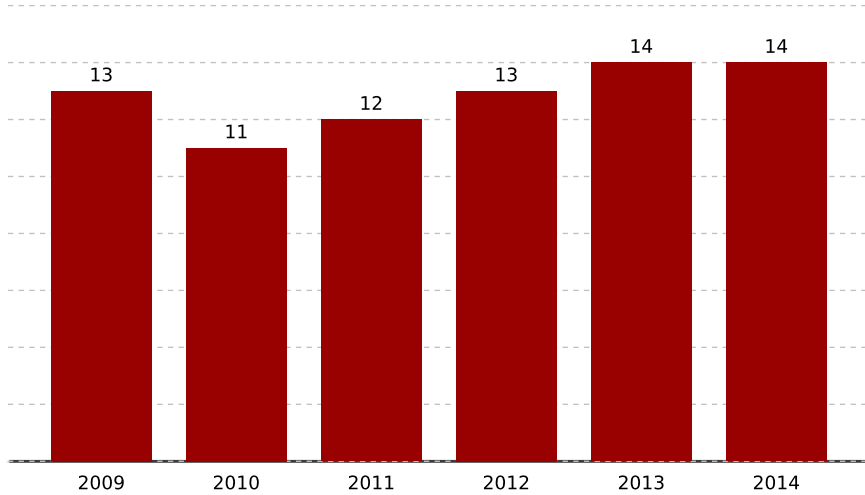


Total Number of Charter Schools (2013-14): 14

Charter Enrollment (2012-13): 6,380
 Non-Charter Enrollment (2012-13): 42,310
 % of Region Enrollment: 13.10 %

Charter School Growth in Physical District-Sacramento City

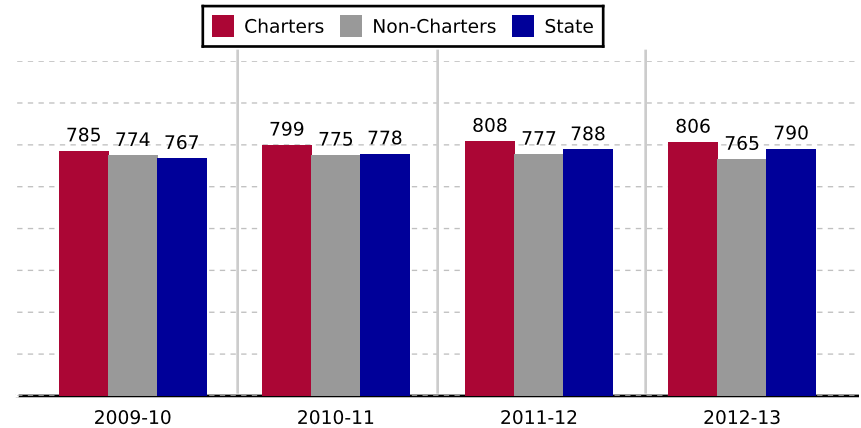
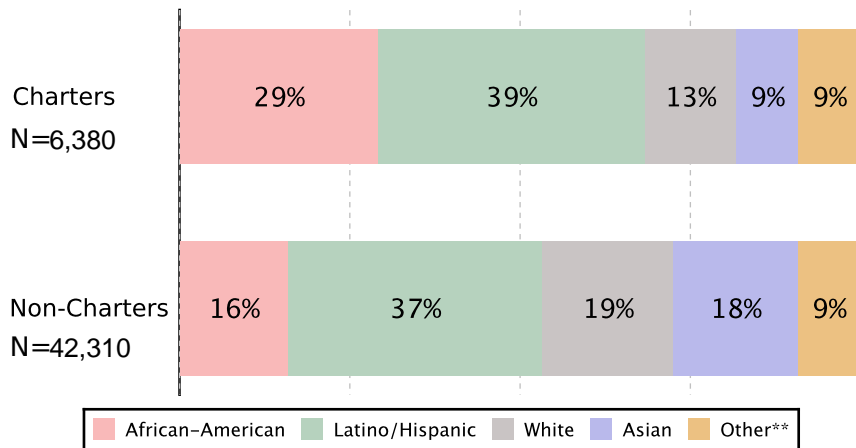
2012-13 Mean API Scores by Subgroup



Charters N=	12	12	10	13	11
Non-Charters N=	69	70	69	70	69

2012-2013 Student Ethnicity

Mean API Scores By Year



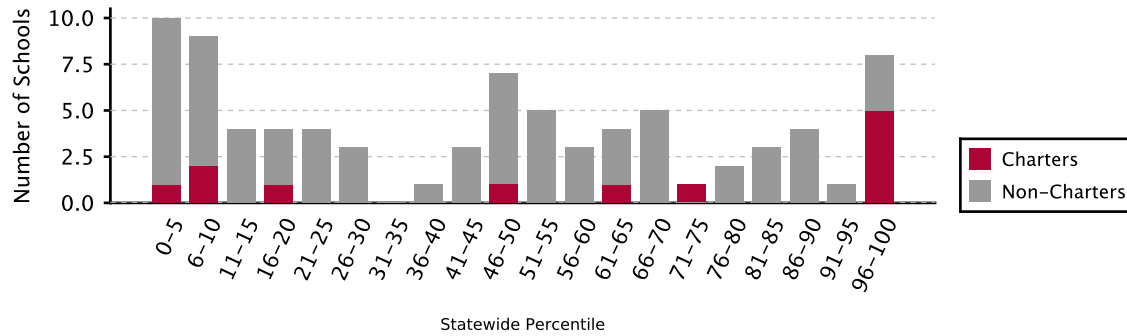
Charters N=	11	12	12	13
Non-Charters N=	68	70	70	70

Charter School Growth Data, Source: CDE data, California Charter Schools Association analysis. **Ethnicity Data**, Source: California Department of Education. **Other includes Indian, Pacific Islander, Filipino and Multi-Racial groups and nonresponses. **Mean API Data**, Source: 2013 API Growth Scores (most recently published 2013 API Growth file), Association analysis. Schools participating in the Alternative Schools Accountability Model excluded from charter and non-charter mean API. State API includes all schools.

CCSA's Similar Students Measure (SSM) and Accountability Criteria

I. Statewide Distribution on Percent Predicted API: Physical District: Sacramento City Unified School District (SCUSD) charter schools compared to all schools statewide on Percent Predicted API. Percent predicted API shows whether schools out-performed or under-performed their Annual School Performance Prediction, a prediction of a school's API performance

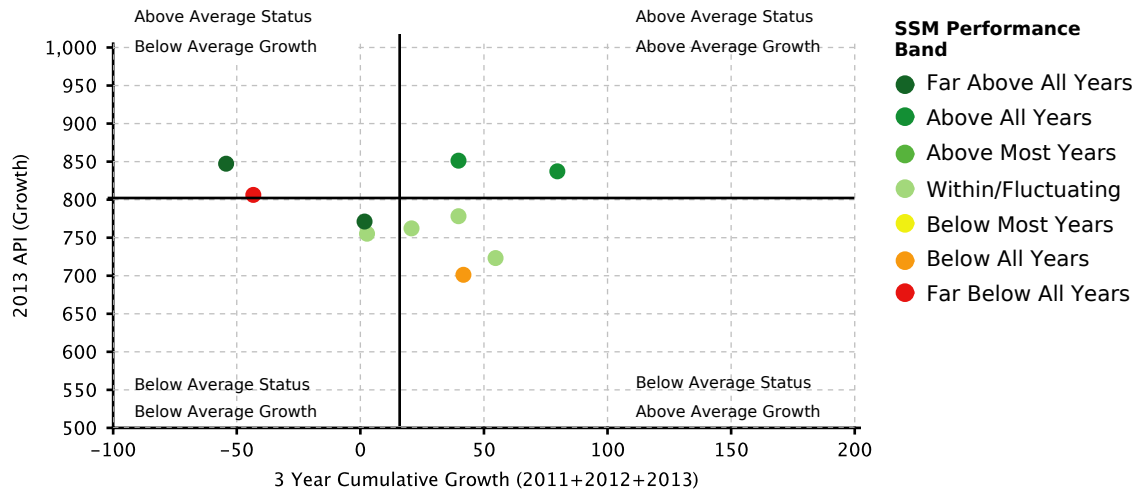
Physical District: Sacramento City Unified School District (SCUSD) Charters vs. Non-Charters: Statewide Distribution on Percent Predicted API, 2013



	Physical District-Sacramento City Unified School District	Physical District-Sacramento City Unified School District	All CA Charters	All CA Non-Charters
Total ¹	12	69	889	7310
Bottom 5% of CA Schools	1 (8%)	9 (13%)	83 (9%)	327 (4%)
Bottom 10% of CA Schools	3 (25%)	16 (23%)	137 (15%)	681 (9%)
Top 10% of CA Schools	5 (41%)	4 (5%)	185 (20%)	633 (8%)
Top 5% of CA Schools	5 (41%)	3 (4%)	130 (14%)	279 (3%)

II. CCSA Accountability Framework: API status, Growth, and Similar Schools Measure (SSM) results only apply to Physical District-Sacramento City Unified School District (SCUSD) charter schools four years and older. The SSM uses three years of Percent Predicted API data to classify schools into performance levels and identify schools that persistently over- and

API Status, Growth, SSM Performance Band for Charters 4+ Years Old Physical District-Sacramento City Unified School District (SCUSD)



	Physical District-Sacramento City Unified School District	Physical District-Sacramento City Unified School District	All CA Charters*	All CA Non-Charters
Total	10	68	643	7165
Below Avg Status/ Below Avg Growth	2 (20%)	39 (57%)	156 (24%)	1833 (25%)
Below Avg Status/ Above Avg Growth	4 (40%)	10 (14%)	161 (25%)	1640 (22%)
Above Avg Status/ Below Avg Growth	2 (20%)	15 (22%)	133 (20%)	1727 (24%)
Above Avg Status/ Above Avg Growth	2 (20%)	4 (5%)	193 (30%)	1965 (27%)

* Numbers in this table only include charters 4 years and older.

III. Accountability and Replication: Physical District-Sacramento City Unified School District (SCUSD) charters identified by CCSA's Minimum Criteria for Renewal and CCSA's criteria

CCSA Minimum Criteria for Renewal:	
API ≤25th percentile of all CA schools in 2013, ≤50 points cumulative API growth in last 3 years, no "Below" Most or All Years on SSM, and 4+ years old	
# of charters in this region below CCSA's Minimum Criteria:	1
# of non-charters in this region below CCSA's Minimum Criteria:	10

CCSA Criteria for High Impact Schools:	
API ≥800, CST ELA/Math Proficiency ≥50%, High School 4-yr Cohort Graduation Rate ≥80%, Not "Below" on CCSA's SSM, 3+ yrs old & non-ASAM	
# of charters in this region identified as a High Impact School:	3
# of non-charters in this region identified as a High Impact School:	19

1. The number of schools included in the above charts is less than the total number of charters because we have excluded schools that participate in the Alternative Schools Accountability Model, schools that tested fewer than 50 students, and those that have no 2013 API score. 2. Source for data on page 2: CDE August 2012 version of 2012 API Growth file, California Charter Schools Association analysis with data correction updates provided by charter schools.

Mapping of Charter Schools in *Physical District-Sacramento City Unified School District (SCUSD)*

[Click here to access a map to this region's active charter schools.](#)

[http://snapshots.calcharters.org/regional_snapshot/physical_district/Sacramento City Unified School District \(SCUSD\)](http://snapshots.calcharters.org/regional_snapshot/physical_district/Sacramento%20City%20Unified%20School%20District%20(SCUSD))

Charter Schools in *Physical District-Sacramento City Unified School District (SCUSD)*

School Name	CDS Code	Physical Address	Physical City	Primary Contact	Title	Grades Served	2012-13 Enrollment	Date Opened
Active Charters								
1. Aspire Capitol Heights Academy	34674390102343	2520 33rd St	Sacramento	Nate Monley	Principal	K-5	284	09/08/2003
2. Bowling Green Charter	34674396033799	4211 Turnbridge Dr.	Sacramento	Rachel Lane	Principal	K-6	812	07/01/1993
3. California Montessori Project - Capitol Campus	34674390111757	2635 Chestnut Hill Dr.	Sacramento	Gary Bowman	Executive Director/Superintendent	K-8	300	07/01/2006
4. Capitol Collegiate Academy	34674390123901	2118 Meadowview Road	Sacramento	Cristin Fiorelli		K-1	114	08/22/2011
5. George Washington Carver School of Arts and Science	34674390101899	10101 Systems Parkway	Sacramento	John Ginn		9-12	276	09/02/2003
6. John Muir Charter School	29102982930147	9845 Horn Road	Sacramento	R.J. Guess	Executive Director	10-12	1387	08/02/1999
7. Language Academy of Sacramento	34674390106898	2850 49th Street	Sacramento			K-8	442	08/30/2004
8. Oak Park Preparatory	34674390125591	2315 34th Street	Sacramento	Paul Schwinn	Principal	7	64	08/21/2012
9. Sacramento Charter High School	34674390102038	2315 34th St.	Sacramento	Dwan Jordon	Principal	9-12	871	09/02/2003
10. Sacramento New Technology High School	34674390101881	1400 Dickson St.	Sacramento	Eric Chapman	Interim Principal	9-12	304	09/02/2003
11. Sol Aureus College Preparatory	34674390101295	6620 Gloria Drive	Sacramento	Norm Hernandez	Principal	K-8	223	08/04/2003
12. St. HOPE Public School 7 (PS7)	34674390101048	5201 Strawberry Lane	Sacramento	Audria Johnson	Principal K-5th Grades	K-8	570	08/04/2003
13. The MET Sacramento	34674390101907	810 V Street	Sacramento			9-12	313	09/07/2003
14. Yav Pem Suab Academy	34674390121665	7555 South Land Park Drive	Sacramento	Dennis Mah	President/ Board President	K-6	420	08/02/2010